

**Compact units** Easy tube insertion for rapid assembly of pneumatic circuits

**Positive tube retention**

**Simplifies pneumatic systems**

**Eliminates need for electrical reed switches**

**Exhausts on signal side (port 2)**



### Technical data

Fluid: Compressed air, nitrogen, inert and non-combustible gases compatible with materials of construction.

Note: For other types of fluids or compressed gases, please consult factory.

#### Operating Pressure:

Cylinder pressure (Pc)  
145 psi (10 bar) max  
Sensor supply pressure  
43 to 145 psi (3 - 10 bar)  
Sensor switch pressure  
14.5 psi (1.0 bar) typical

#### Operating Temperature:

0° to 175°F (-20° to +80°C)

#### Body Ports

5/32" O.D. tube Push-in  
4mm O.D. tube Push-in  
1/8, 1/4 NPTF Banjo Bolt  
1/8, 1/4 ISO G Banjo Bolt

#### Tube Sizes

5/32" O/D  
4mm O/D

#### Tubing Types:

Nylon 11 or 12, polyurethane (95 durometer or above) and LPDE (Low Density Polyethylene)

#### Materials

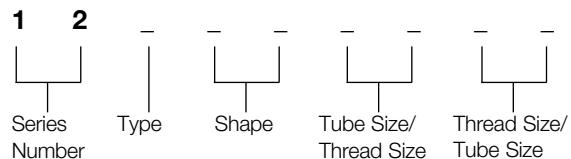
Body, swivel fitting and collet: Nickel plated brass  
O-ring: Silicone free Nitrile  
Sealing washer (parallel male threads): Thermoplastic  
Tubing: Nylon 11 or 12, Polyurethane (95 durometer or above) and LDPE (Low Density Polyethylene).

Note: Lower durometer polyurethane may be used, however, an internal tube support is required to prevent internal collapse of the tube wall.

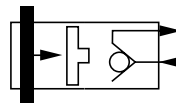
### Ordering Information

To order, quote appropriate product number from the tables on the following pages.

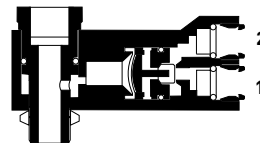
Product numbering system is designed to make identification and selection simple:



**124GD**

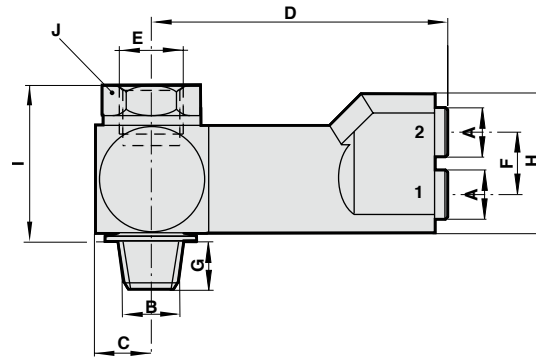


**124GD**



**Pressure Sensor Fitting- 124GD**

Inch O.D. tube x NPTF Banjo Bolt



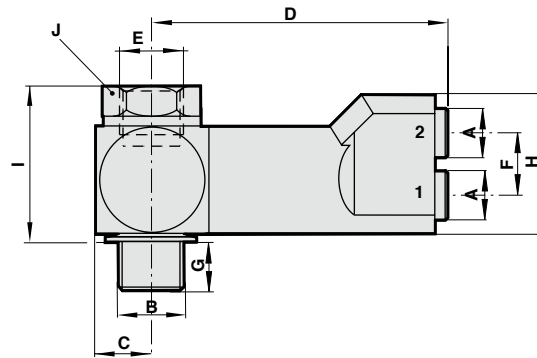
Product Number	A Tube O/D	B NPT Thread	C	D	E NPT Thread	F	G	H	I	J A/F
124GD0218	5/32"	1/8	0.35 (9)	1.77 (45)	1/8	0.39 (10)	0.39 (10)	0.83 (21)	1.12 (29)	9/16"
124GD0228	5/32"	1/4	0.43 (11)	1.85 (47)	1/4	0.39 (10)	0.56 (14)	0.83 (21)	1.33 (34)	3/4"

This sensor fitting produces an end of stroke signal when exhaust back pressure in a cylinder decays below a set value. It should be mounted directly on the cylinder and can be used with a flow control device mounted into the top port.

It is recommended that the sensor supply pressure to port 1 be the same as the nominal working pressure of the cylinder.

**Pressure Sensor Fitting- 102GD**

mm O.D. tube x ISO G Banjo Bolt



Product Number	A Tube O/D	B ISO G Thread	C	D	E ISO G Thread	F	G	H	I	J A/F
102GD0418	4	1/8	0.35 (9)	1.77 (45)	1/8	0.39 (10)	0.24 (6)	0.83 (21)	0.98 (25)	0.59 (15)
102GD0428	4	1/4	0.43 (11)	1.85 (47)	1/4	0.39 (10)	0.28 (7)	0.83 (21)	1.14 (29)	0.75 (19)

This sensor fitting produces an end of stroke signal when exhaust back pressure in a cylinder decays below a set value. It should be mounted directly on the cylinder and can be used with a flow control device mounted into the top port.

It is recommended that the sensor supply pressure to port 1 be the same as the nominal working pressure of the cylinder.